



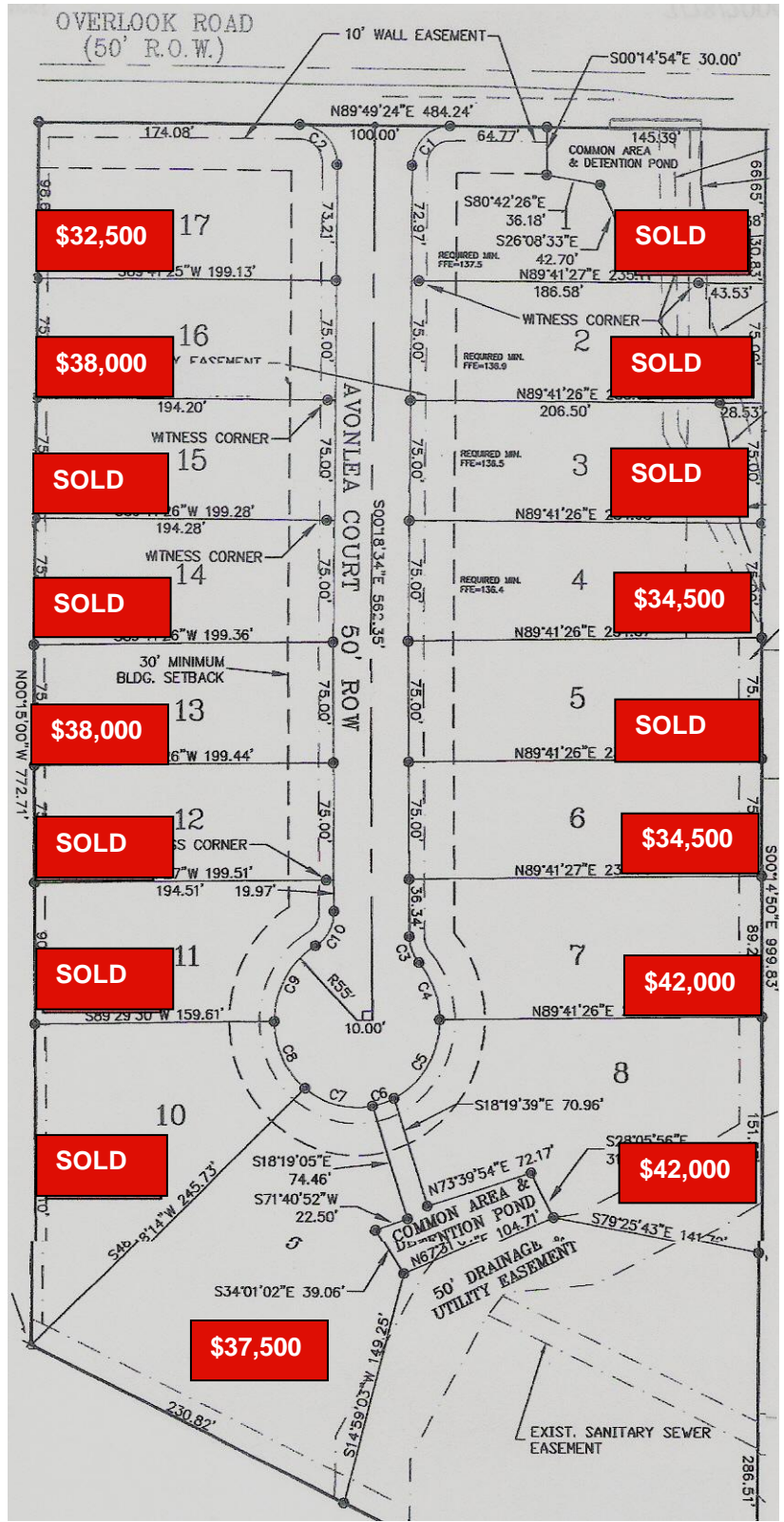
A New Community in the Mobile City Limits

- Great Location,
- Convenient Access to University Blvd. & Moffett Rd.
- Highly Restricted Wooded Lots
- Minimum 2,400 Square Feet
- All Underground Utilities
- Services Provided By Mobile Gas & Mobile Area Water and Sewer
- Lighted Streets with Sidewalks, Curb & Gutter
- Exquisite Brick Entrance with Lighted Landscaping
- Matching Mailboxes
- Landscaped Common Areas
- Homeowners Association & Garden Club
- Owner Financing Available



251-649-1200

Lot Prices (Subject to Change)	
Lot 1 SOLD	Lot 2 SOLD
Lot 3 SOLD	Lot 4 \$34,500
Lot 5 SOLD	Lot 6 \$34,500
Lot 7 \$42,000	Lot 8 \$42,000
Lot 9 \$37,500	Lot 10 SOLD
Lot 11 SOLD	Lot 12 SOLD
Lot 13 \$38,000	Lot 14 SOLD
Lot 15 SOLD	Lot 16 \$38,000
Lot 17 \$32,500	



Prices are subject to change.