



**A Beautiful Community  
in the Mobile City Limits**

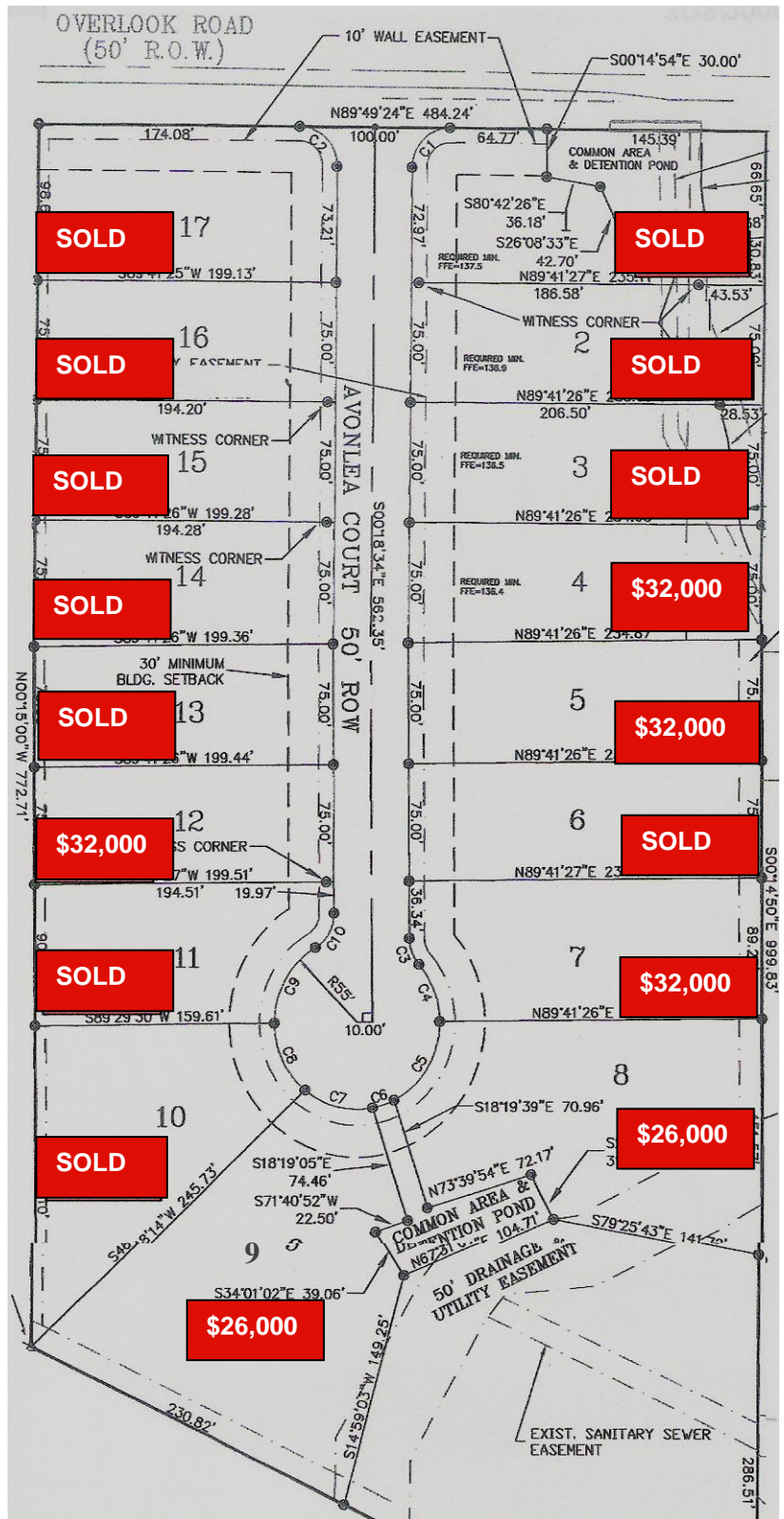
- Great Location,
- Convenient Access to University Blvd. & Moffett Rd.
- Highly Restricted Wooded Lots
- Minimum 2,400 Square Feet
- All Underground Utilities
- Services Provided By Mobile Gas & Mobile Area Water and Sewer
- Lighted Streets with Sidewalks, Curb & Gutter
- Exquisite Brick Entrance with Lighted Landscaping
- Matching Mailboxes
- Landscaped Common Areas
- Homeowners Association
- Owner Financing Available



**251-649-1200**

**Lot Prices  
(Subject to Change)**

Lot 1 SOLD	Lot 2 SOLD
Lot 3 SOLD	Lot 4 \$32,000
Lot 5 \$32,000	Lot 6 SOLD
Lot 7 \$32,000	Lot 8 \$26,000
Lot 9 \$26,000	Lot 10 SOLD
Lot 11 SOLD	Lot 12 \$32,000
Lot 13 SOLD	Lot 14 SOLD
Lot 15 SOLD	Lot 16 SOLD
Lot 17 SOLD	



Prices are subject to change.